

*657 Old Slave Rd.  
Wildwood, Mo 630005*

***SALE PRICE: \$345,000***



*Contact*

*Cathy Shaw-Connely  
(636) 346-4960  
squawky1@aol.com*

Beautiful 5+/- acre wooded lot great for horses and within riding distance to the trails in Babler State Park. You can have the best of everything - close to conveniences yet private and wooded.

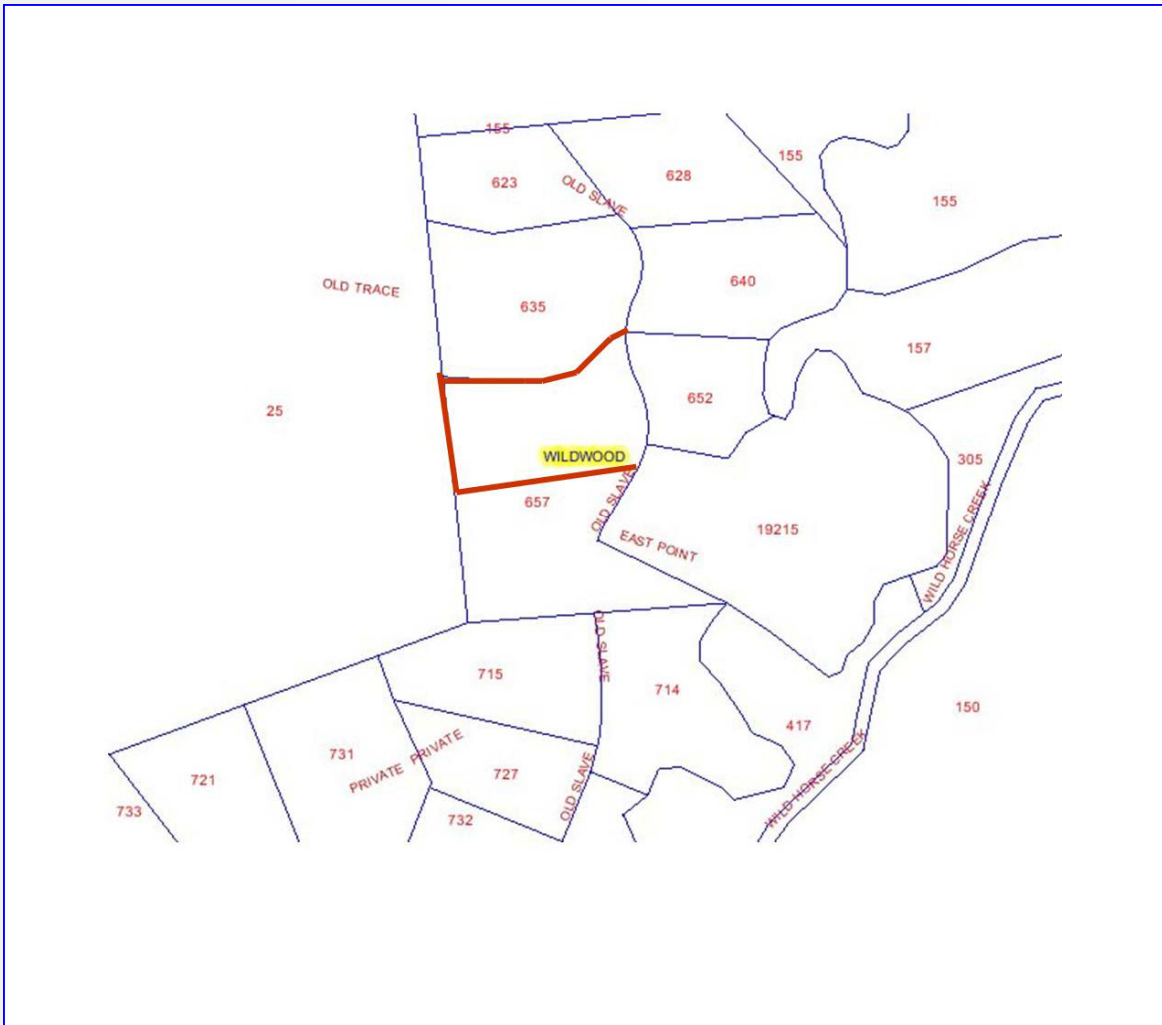
**DIRECTIONS:**

*Wild Horse Creek Rd to Right on Old Slave Rd. To Property on left.*



200 Long Road ♦ Suite 160 ♦ Chesterfield, Missouri 63005

Office: (636) 532-1922 ♦ Fax: (636) 532-0222 ♦ info@shawrealtors.com ♦ www.shawrealtors.com



### Area Information / Property Description

County	St. Louis
Subdivision	
School District	Rockwood
High School	Lafayette
Middle School	Rockwood Valley
Elementary School	Chesterfield
Lot Size	5.00± Acres
Lot Description	Back to Trees, Wooded, Corner Lot
Street Access	Private
Taxes	\$ To Be assessed
Associations Fees & Restrictions	.Restrictions: Yes Road Maintenance to be assessed in the future
Utilities	Water: None Electric: Yes Phone: Yes Sewer: None



The information contained herein has been supplied to us by the owner of this property or by a third party. Tom Shaw Realtors does not guarantee its accuracy and recommends buyers or tenant to verify all information herein and to obtain a full boundary survey before buying said home or property. **PRICES AND SPECIFICATIONS ARE SUBJECT TO CHANGE WITHOUT NOTICE**