

817 Wildflower Valley High Ridge, Mo 63049

SALE PRICE: \$149,900



Contact

*Cathy Shaw-Connely
(636) 346-4960
squawky1@aol.com*

*Kathy Loehr
(314) 330-7378*

***Beautiful wooded lot in St. Louis County,
Rockwood Schools. Only minutes from Hwy
44 in Paradise Valley Subdivision.***

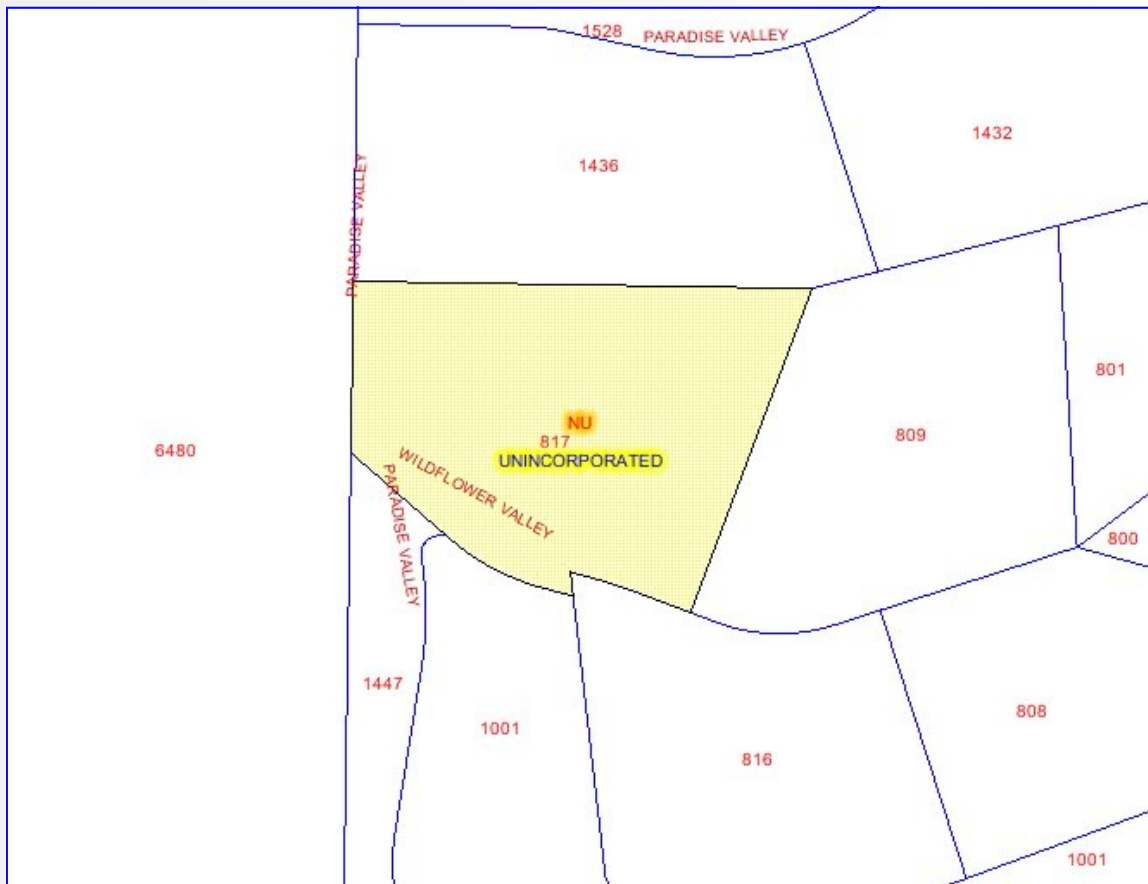
DIRECTIONS:

*Hwy 44 West*Exit at 141 toward Fenton*Right onto
Meramec Station*Left onto Hillsboro Road*Enter Para-
dise Valley Golf Course on Lochmoor*Right onto Para-
dise Valley Drive to Wildflower Valley Drive.*



200 Long Road ♦ Suite 160 ♦ Chesterfield, Missouri 63005

Office: (636) 532-1922 ♦ Fax: (636) 532-0222 ♦ info@shawrealtors.com ♦ www.shawrealtors.com



Area Information / Property Description

County	St. Louis
Subdivision	Paradise Valley
School District	Rockwood
High School	Rockwood Summit
Middle School	Rockwood South
Elementary School	Station
Lot Size	3.17± Acres
Lot Description	Back to Trees, Wooded, Corner Lot
Street Access	Private
Taxes	\$ 1956.00 2007
Associations Fees & Restrictions	\$ 60.00 Recorded Restrictions, Minimum Sq. Ft.
Utilities	Water: Public Electric: Yes Phone: Yes Sewer: Public



The information contained herein has been supplied to us by the owner of this property or by a third party. Tom Shaw Realtors does not guarantee its accuracy and recommends buyers or tenant to verify all information herein and to obtain a full boundary survey before buying said home or property. **PRICES AND SPECIFICATIONS ARE SUBJECT TO CHANGE WITHOUT NOTICE**